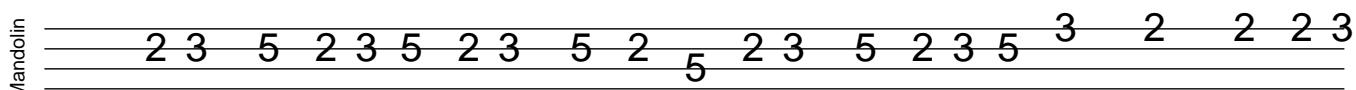
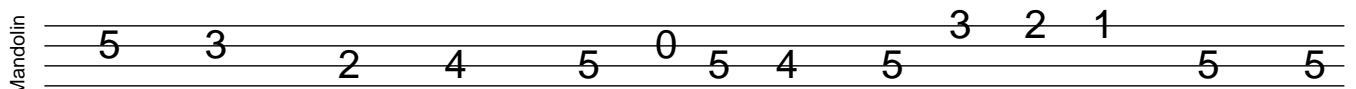
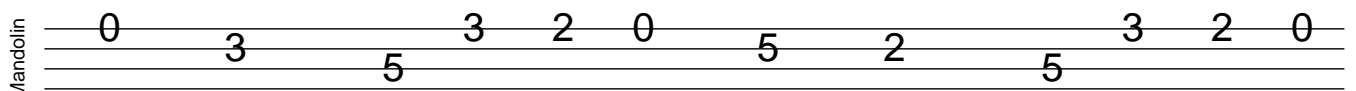
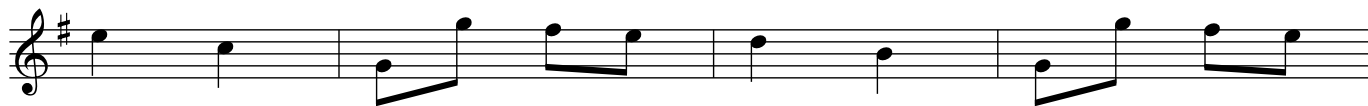
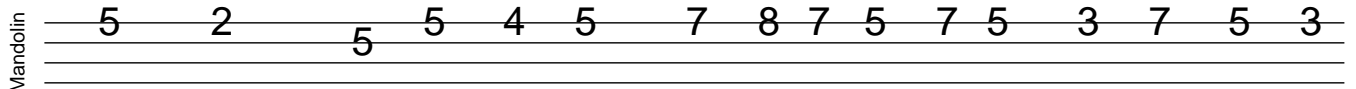
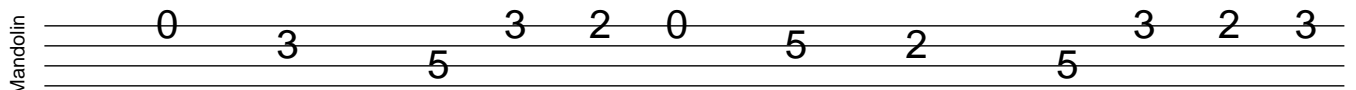
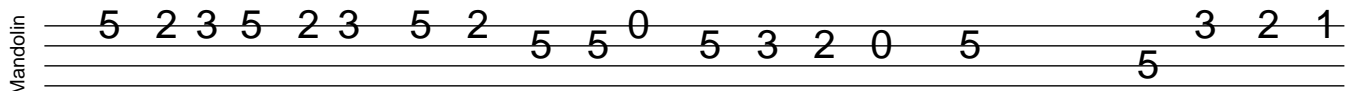
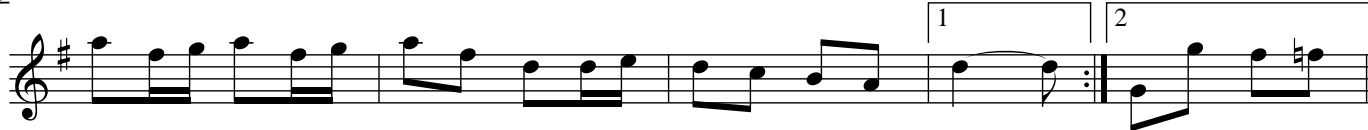
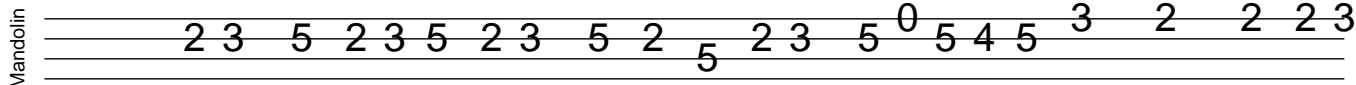


Björn's

mandolintab.net



Musical staff with treble clef, key signature of one sharp (F#), and a common time signature. The staff contains a melodic line with a repeat sign and two endings. The first ending is marked with a '1' and the second with a '2'. Chords G and G7 are indicated above the staff.

Mandolin fretboard diagram for the first system, showing fingerings for the four strings. The notes correspond to the first system's melody.

Musical staff with treble clef, key signature of one sharp (F#), and a common time signature. The staff contains a melodic line with a repeat sign and two endings. Chords C and G are indicated above the staff.

Mandolin fretboard diagram for the second system, showing fingerings for the four strings. The notes correspond to the second system's melody.

Musical staff with treble clef, key signature of one sharp (F#), and a common time signature. The staff contains a melodic line with a repeat sign and two endings. Chords D7, G, and G7 are indicated above the staff.

Mandolin fretboard diagram for the third system, showing fingerings for the four strings. The notes correspond to the third system's melody.

Musical staff with treble clef, key signature of one sharp (F#), and a common time signature. The staff contains a melodic line with a repeat sign and two endings. Chords C and G are indicated above the staff.

Mandolin fretboard diagram for the fourth system, showing fingerings for the four strings. The notes correspond to the fourth system's melody.

Musical staff with treble clef, key signature of one sharp (F#), and a common time signature. The staff contains a melodic line with a repeat sign and two endings. Chords D7, G, D7, G, and G7 are indicated above the staff.

Mandolin fretboard diagram for the fifth system, showing fingerings for the four strings. The notes correspond to the fifth system's melody.

Musical staff with treble clef, key signature of one sharp (F#), and a common time signature. The staff contains a melodic line with a repeat sign and two endings. Chords are indicated above the staff.

Mandolin fretboard diagram for the sixth system, showing fingerings for the four strings. The notes correspond to the sixth system's melody.

Musical staff with treble clef, key signature of one sharp (F#), and a common time signature. The staff contains a melodic line with a repeat sign and two endings. Chords are indicated above the staff.

Mandolin fretboard diagram for the seventh system, showing fingerings for the four strings. The notes correspond to the seventh system's melody.

Mandolin

3 5 2 3 5 3 2 5 0 2 0 2

Mandolin

3 0 4 5 0 2 3 5 2 5 0 2

Mandolin

3 5 2 3 5 3 2 5 0 2 0 5

Mandolin

4 2 5 0 4 5 4 2 5 5 0 2 4 4

Mandolin

2 3 5 2 3 5 2 3 5 2 5 2 3 5 3 2 2 3

Mandolin

5 2 5 2 5 3 2 0 5 0 5 3 2 0 5 5 3 2 1

Mandolin

0 3 5 3 3 2 0 5 2 5 3 2 3

