

# Gan Ainm

mandolintab.net

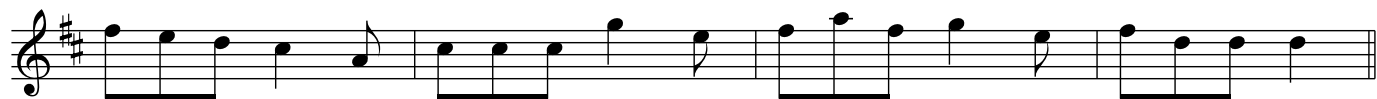
This image displays the mandolin tablature for the piece 'Gan Ainm'. It consists of ten systems, each containing a standard musical staff with a treble clef and a key signature of one sharp (F#), and a corresponding mandolin staff with fret numbers. The music is written in 6/8 time. The mandolin staves use fret numbers 0 through 5, with some instances of a triplet of 3s. The notation includes eighth and sixteenth notes, often beamed together, and rests. The overall structure is a continuous melodic line across the ten systems.



Mandolin  
3 0 2 5 5 0 5 5 3 0 2 5 2 3 0 2 5 5 5 3



Mandolin  
2 0 5 4 0 0 4 4 4 3 2 0 5 4 0 2 5 5 5 0



Mandolin  
2 0 5 4 0 4 4 4 3 0 2 5 2 3 0 2 5 5 5